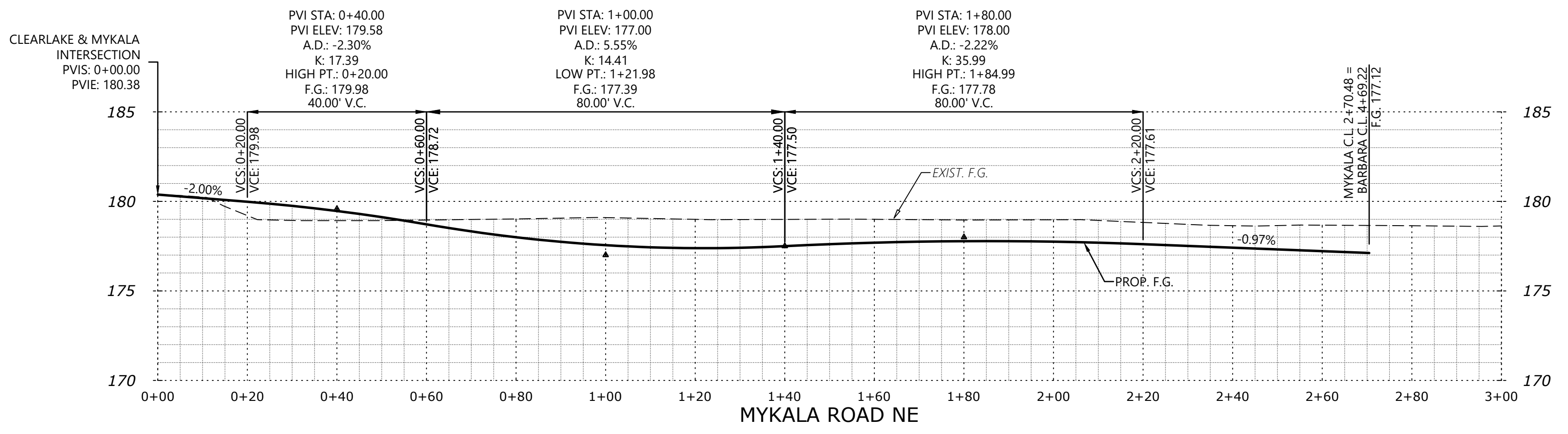


**MULTI/TECH**  
 ENGINEERING SERVICES, INC.  
 1155 13th ST. S.E. SALEM, OR, 97302  
 www.multi-tech-engineering.net office@multi-tech-engineering.net

**STREET IMPROVEMENTS**

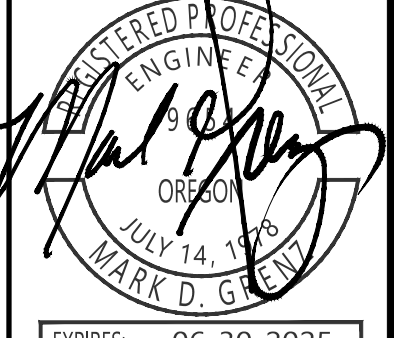
**CLEARLAKE**

NO CHANGES, MODIFICATIONS OR REPRODUCTIONS TO BE MADE TO THESE DRAWINGS WITHOUT WRITTEN AUTHORIZATION FROM THE DESIGN ENGINEER. DIMENSIONS & NOTES TAKE PRECEDENCE OVER GRAPHICAL REPRESENTATION.



VERTICAL PROFILE SCALE  
 1" = 5'  
 1" = 20'  
 HORIZONTAL

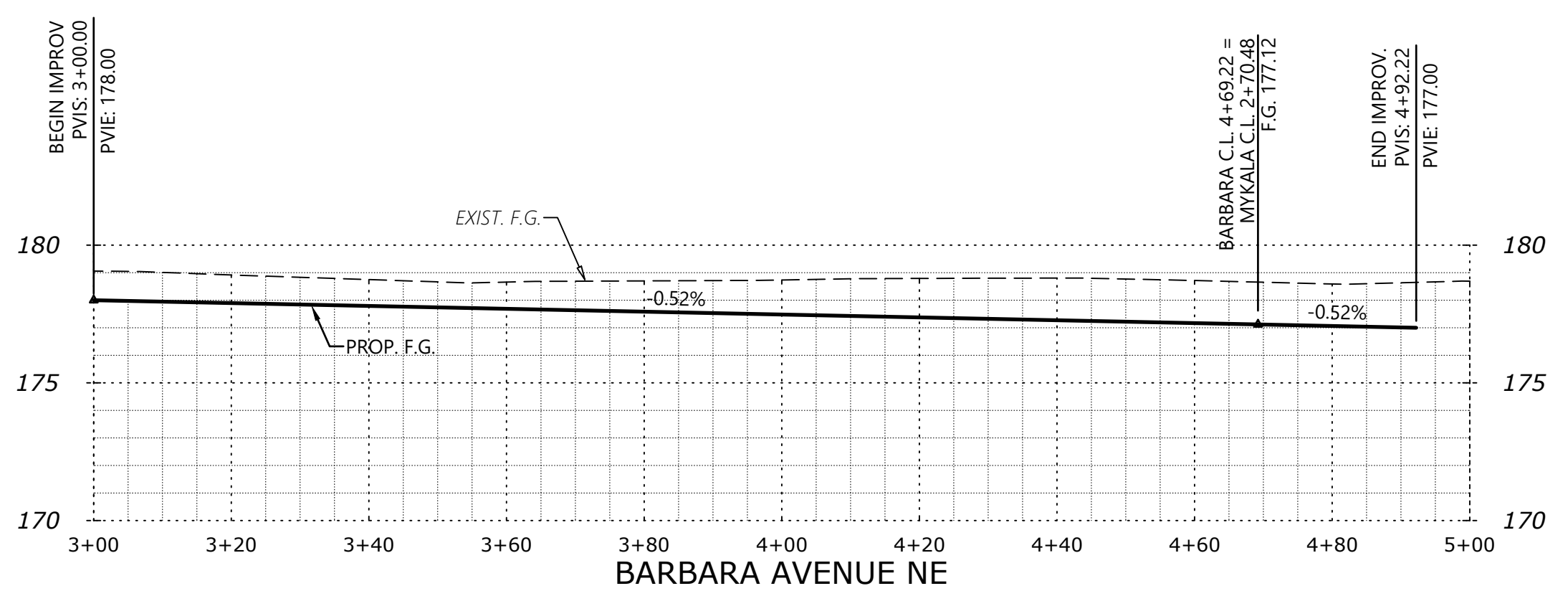
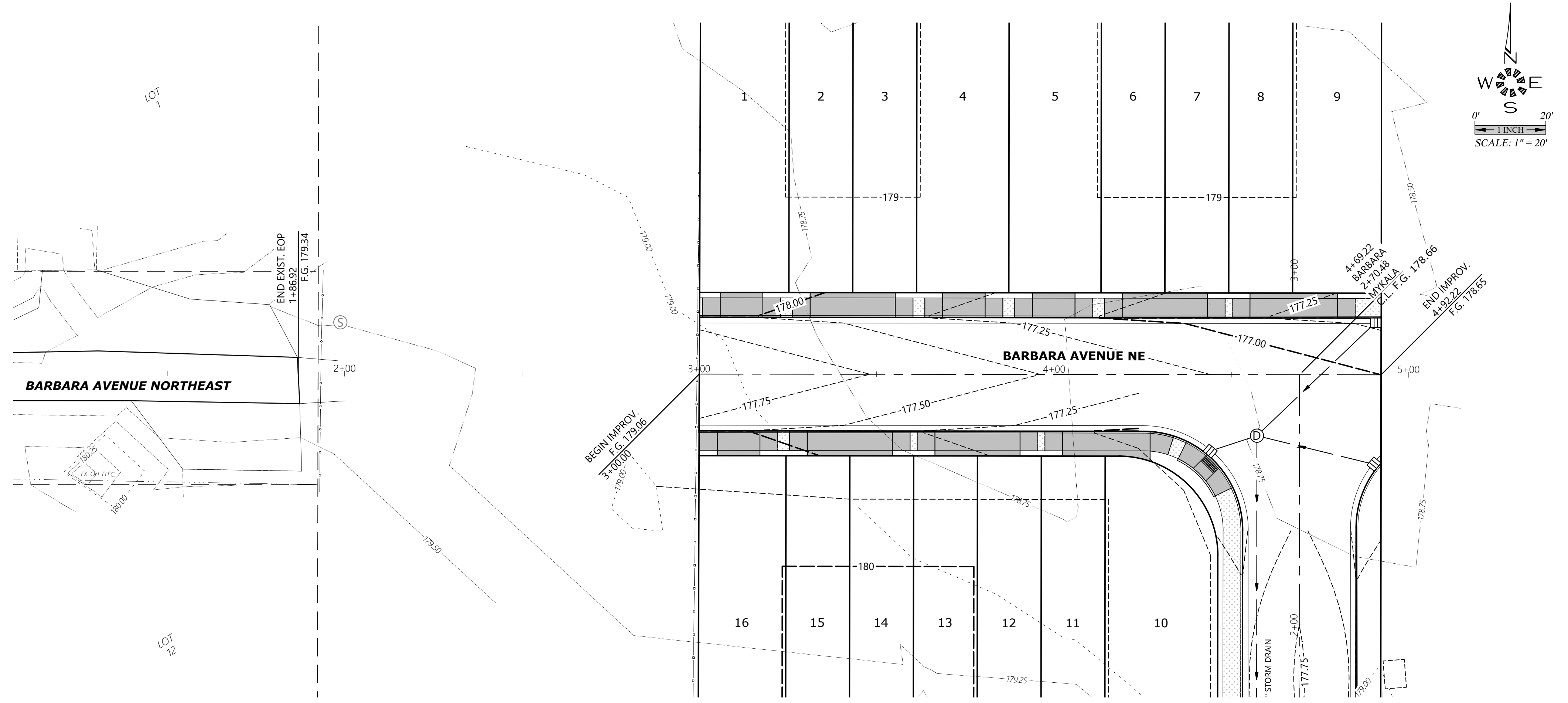
Design: M.D.G.  
 Drawn: M.K.D.  
 Checked: J.J.G.  
 Issue Date: 2/15/2024  
 Scale: AS SHOWN  
 As-Built: \_\_\_\_\_



EXPIRES: 06-30-2025  
 JOB # 7611

J:\New\7611 - Clearlake\1150\Draw\23\7611.dwg, 4/11/24, 2:15:02 PM, 102659 AIA, MDDmmr

2/16/2025 1:13:01 PM - Clear Lake (1/19/2024) 2/16/2025 1:13:01 PM - 400.51, 1/20/2024 8:53:36 AM, MD:dmr



VERTICAL  
1" = 5'  
PROFILE SCALE  
1" = 20'  
HORIZONTAL

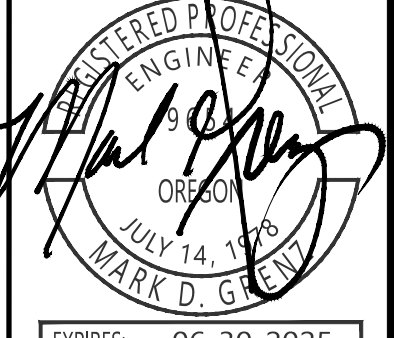


# STREET IMPROVEMENTS

# CLEARLAKE

NO CHANGES, MODIFICATIONS OR REPRODUCTIONS TO BE MADE TO THESE DRAWINGS WITHOUT WRITTEN AUTHORIZATION FROM THE DESIGN ENGINEER. DIMENSIONS & NOTES TAKE PRECEDENCE OVER GRAPHICAL REPRESENTATION.

76115 400.51'  
 Design: M.D.G.  
 Drawn: M.K.D.  
 Checked: J.J.G.  
 Issue Date: 1/9/2024  
 Scale: AS SHOWN  
 As-Built: \_\_\_\_\_



EXPIRES: 06-30-2025  
 JOB # 7611

# 402